

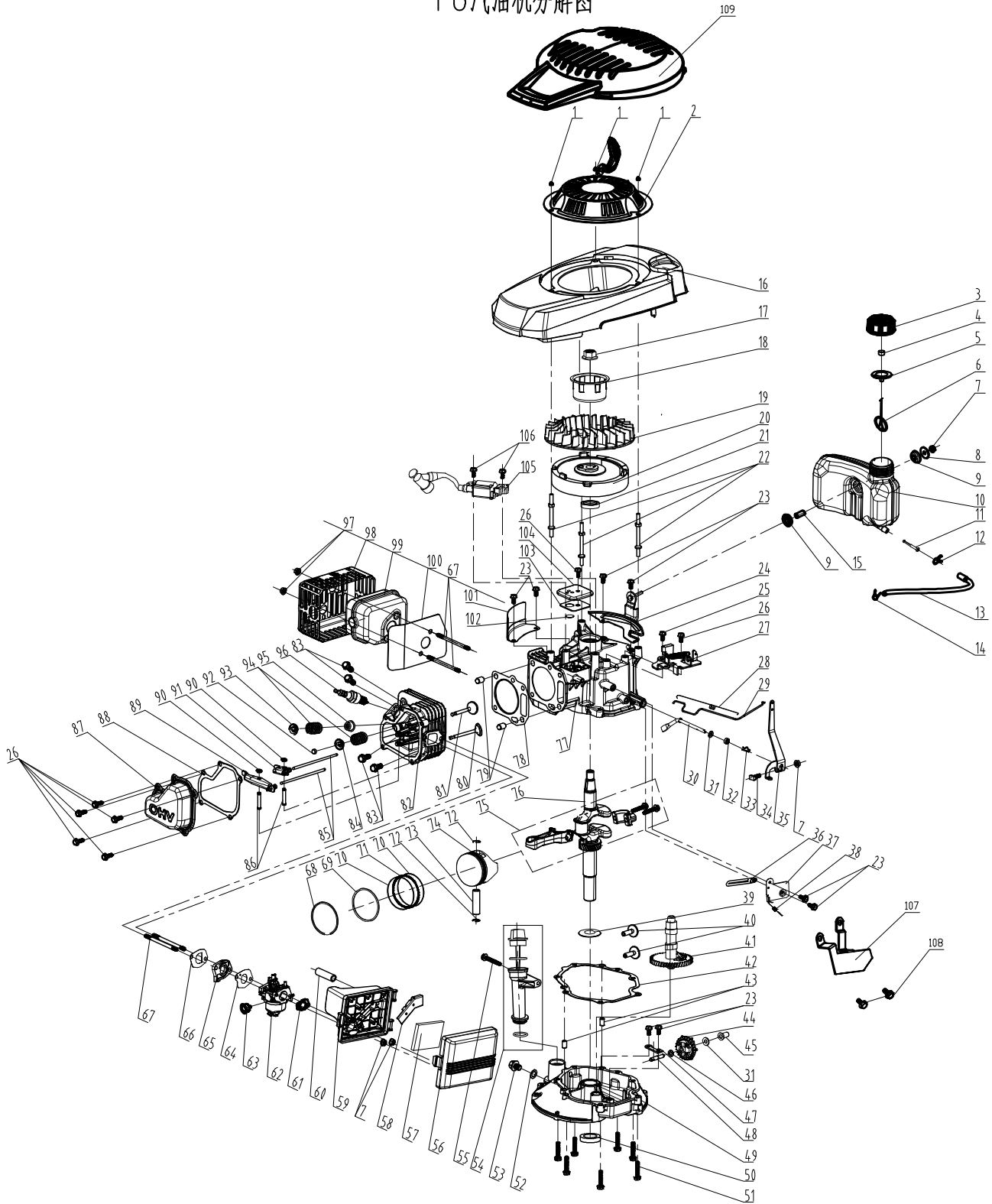
							定速刹车+旋扭			宁波市德霖机械有限公司	
标记	处数	分区	更改文件号	签名	年月日		阶段标记	数量	重量	比例	S421V欧洲状态爆炸图
设计			标准化					1			
校对			审定								
审核											
工艺			批准								
							共 1 页		第 1 页		

RPM 4235

Pozice	Obj.číslo	Popis	Počet
1	20340060130	foam pipe	1
2	70550100130	Self-propelled Lever	1
3	70500550031	upper handrail	1
4	70540083081	stop lever	1
5	20030030000	lever guard	1
6	60150080000	Hex lock nut	8
7	70050120000	Brake Cable Assy plate	1
8	60060590000	Bolt	2
9	70780240000	selfpropelled cable	1
10	70810210000	brake cable	1
11	70230090000	Rope Guide	1
12	60130020000	Cap nut	4
13	20240020000	fastener	1
14	70520290031	lower handrail	2
15	60040090000	heterotypic carriage bolts	2
16	20350010000	handrail stopper	2
17	60140080000	Hexagon nut	6
18	20040050081	thick knob	2
19	20040010081	thin knob	2
20	60200470000	flat Gasket	6
21	60040160000	Half round head square neck bolts	2
22	60040090000	Half round head square neck bolts	2
23	20040030081	triangle knob	2
24	20620350081	outer cover of hub	2
25	60150090000	Self-locking nut	12
26	20880300000	wheel assy.	2
27	20610150000	inner cover of hub	2
28	70850730000	rear drive assy.	1
29	20430030060	rear wheel axle sleeve	2
30	60300030000	R type pin	2
31	60060520000	Bolt	6
32	70290200000	Displacement pressure plate after	2
33	20270010081	height adjustment ball	1
34	60240060000	spring washer	6
35	70300180000	Ratchet Wheel L	1
36	21070030000	selfpropelled ratchet washer	4
37	60290080000	bratchet pin	2
38	70860530000	selfpropelled assy.	1
39	70300170000	Ratchet Wheel L	1
40	60410680000	selfpropelled spring	1
41	60320300000	v belt	1
42	70050340000	Brake spring	1
43	20400120000	rear baffer	1

44	60170290000	Phillips flat head self tapping screw	9
45	20160140000	mulching plug	1
46	60200540000	flat washer	2
47	70180320081	Height Adjustment Pull Rod	1
48	70740950130	deck assy.	1
49	20590020000	cable stopper	1
50	60060540000	Bolt	3
51	60040020000	Half round head square neck bolts	6
52	70070430000	Left bracket	1
53	20390020000	rear discharge base	1
54	60190030000	Large flat washer	2
55	60171980000	Phillips flat head self tapping screw	2
56	20390030000	rear discharge base	2
57	70070440000	Right bracket	1
59	60080280000	Dual-head bolts	2
60	60060390000	Hexagon head bolts	1
61	60200530000	Square gasket	3
62	60370020000	"O" ring	1
63	20460010000	inlet	1
64	20460030000	exhalent siphon	1
65	70250150000	Board for Height Adjuster	1
66	20070070094	fabric grass bag	1
67	70040100000	blade washer	4
68	20080080000	top of grass box	1
69	20060050000	air-out board of fabric grass bag cover	1
70	20090020000	protection board of grass bag	1
71	70020060000	plastic top frame	1
72	60220010000	lock washer	2
73	20380080000	rear discharge cover	1
74	60380240000	cover spring	1
75	70030020000	Shaft for rear discharge cover	1
76	20620340081	outer cover of hub	2
77	20880490000	wheel core	2
78	60180110000	wave washer	2
79	70840240000	front drive assy.	1
80	20660180000	belt cover	1
81	70140510000	Blade Adapter	1
82	70130380000	blade	1
83	70040070000	blade washer	1
84	60100030000	Inch hex flange bolts	1

T6汽油机分解图



比例尺
 比例
 日期
 设计
 审核
 工艺

				宁波市德霖机械有限公司			
				T6定速割草款			
标记	页数	分区	更改文件号	签名	年月日	数量	重量
设计			标准化			1	1.4
校对			审核				
审核							
工艺			批准				
						共1页	第1页
						版本	A1

T6 Engine (RPM 4235)

Pozice	Obj.číslo	Popis	Počet
1	60130020000	Cap nut	3
2	75430110000	pull starter assy.	1
3	25170110000	fuel tank cap	1
4	80010070000	fuel tank cap sponge	1
5	60440340000	Fuel Tank Cap seal gasket	1
6	25250010000	connect cable of fuel cap	1
7	60140020000	Hex flange nuts	4
8	60190310000	The oil tank mount big washer	1
9	25310030000	Fuel Tank Cap seal gasket	2
10	25180230000	fuel tank body	1
11	25150010000	Filtering Net Duct of Fuel	1
12	60230020000	fuel pipe lock clamp I	1
13	25160010000	fuel pipe	1
14	60230010000	fuel pipe lock clamp II	1
15	60240250000	Fuel tank mounting bushing	1
16	25190250000	The transparent cover	1
17	60140050000	Hex flange nuts	1
18	75210010000	starter hub	1
19	25040110000	fan	1
20	75390240000	flywheel assy	1
21	60360090000	oil seal	1
22	60080230000	Dual-head bolts	3
23	60060520000	Bolt	8
24	75330070000	main bracket of fuel tank	1
25	60060550000	Bolt	1
26	60060530000	Bolt	7
27	75380900000	detent assy.	1
28	60410050000	valve spring	1
29	75160060000	Handspike of Valve	1
30	75290010000	rate-limiting rocker arm shaft	1
31	60200490000	Gasket	2
32	60360080000	oil seal	1
33	60300040000	R type pin	1
34	60060730000	bolt	1
35	75070040000	throttle rocker arm	1
36	60450010000	clip	1
37	75360010000	single phrase throttle assy.	1
38	60410760000	throttle control spring	1
39	60200180000	clockwise gear gasket	1
40	75250010000	pin	2
41	75470100000	camshaft assy.	1
42	75720240000	Respirator head gasket	1
43	60280030000	spacing pin	2

44	75520020000	rete-limiting gear assy.	1
45	25070010000	Sliding Sleeve	1
46	60200060000	Gasket	1
47	75280020000	rate-limiting gear shaft clamp	1
48	75270030000	rate-limiting gear shaft	1
49	75240120000	Crank box cover	1
50	60360100000	oil seal	1
51	60060590000	Bolt	7
52	60200150000	Oil drain bolt gasket	1
53	60061020000	Oil drain bolt	1
54	25200130000	Lubricating Gauge Assy	1
55	60060630000	Bolt	1
56	25120060000	Air Filter Cover	1
57	25300120000	Foam filter	1
58	25020050000	Vent groove cover plate	1
59	25110100000	An air filter base.	1
60	25030070000	waste pipe	1
61	75730100000	Air filter paper pad	1
62	75410620000	CARBURETOR	1
63	25210020130	prime button II	1
64	75730030000	Carburetor paper pad II	1
65	25090010000	Air Inlet Pipe	1
66	75730020000	Carburetor paper pad I	1
67	60080030000	Dual-head bolts	4
68	75130130000	Piston Ring I	1
69	75130140000	Piston Ring II	1
70	75090060000	Guide Rail	2
71	75000070000	Bushing Ring	1
72	60400020000	Piston Pin circlip	2
73	60310010000	piston pin	1
74	75120090000	Piston	1
75	75460070000	connecting rod assy.	1
76	75510750000	crankshaft assy.	1
77	75500160000	crankshaft box assy.	1
78	75720100000	Cylinder head gasket	1
79	60280020000	spacing pin	2
80	75190040000	Exhaust Valve	1
81	75170040000	IntakeValve	1
82	75490090000	cyclinder head assy.	1
83	60050030000	locking bolt	4
84	75180020000	Spring Coil of Exhaust Valve	1
85	75350030000	push rod	2
86	75290050000	Valve rocker shaft	2
87	75080040000	cylinder head cover	1
88	75720300000	Cylinder head gasket	1
89	75230031000	Exhaust valve rocker combination	1

90	60240290000	washer	2
91	75230030000	Air intake door rocker combination	1
92	75200010000	Top Cover of Exhaust Valve	1
93	75180010000	Spring Coil of Intake Valve	2
94	60380090000	valve spring	2
95	60360130000	oil seal assy	1
96	75140010000	spark plug	1
97	60150100000	Self-locking nut	2
98	75530030000	muffler cover assy.	1
99	75540150000	muffler assy.	1
100	75740020000	Muffler insulating pad	1
101	75030110000	wind shield	1
102	75100030000	Respirator valve plate	1
103	75720310000	Respirator head gasket	1
104	75400030000	Valve rocker shaft	1
105	75370070000	ignition assy.	1
106	60060580000	Bolt	2
109	25190160081	Starter mask	1